

Sorrento – Contemporary

Lot 9 Clonard Way
Little Bay



ILUKA
AT LITTLE BAY



Iluka at Little Bay – the finest
in contemporary coastal living

House size 254.1m²

Land size 394.8m²



Discover beautiful Iluka at Little Bay, one of the last parcels of land available in the Eastern Suburbs of Sydney. Minutes from some of the finest beaches, golf courses, cafes and the prized Botany Bay National Park, Iluka at Little Bay offers an unparalleled lifestyle just 13kms from Sydney's CBD. Featuring quality, contemporary homes that compliment the coastal surrounds, you and your family will find Iluka irresistible. Iluka at Little Bay is minutes from:

- Anzac Parade offering easy express public transport to the city
- Access to existing cycle and bushland walking tracks
- Little Bay beach for swimming and snorkelling
- Little Bay and La Perouse café precinct
- Westfield Eastgardens Shopping Centre
- Local schools, childcare and University of New South Wales
- Cafés, restaurants and beaches of the dynamic Eastern Suburbs
- Four of Sydney's top links golf courses including NSW, St Michaels, Randwick and the Coast

Sorrento – Contemporary

Lot 9 Clonard Way
Little Bay



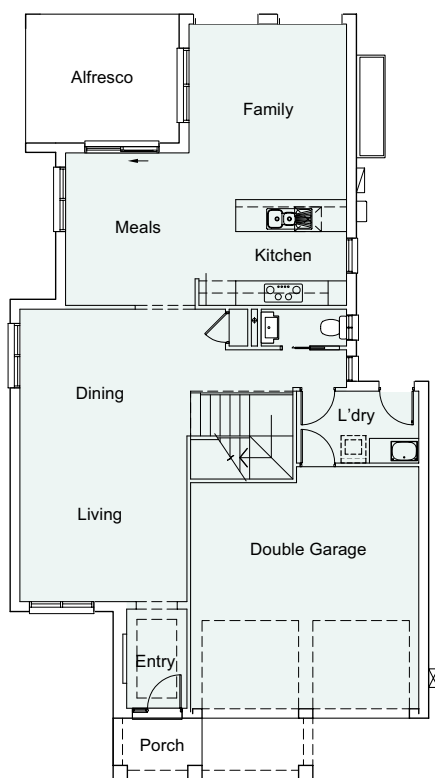
ILUKA
AT LITTLE BAY



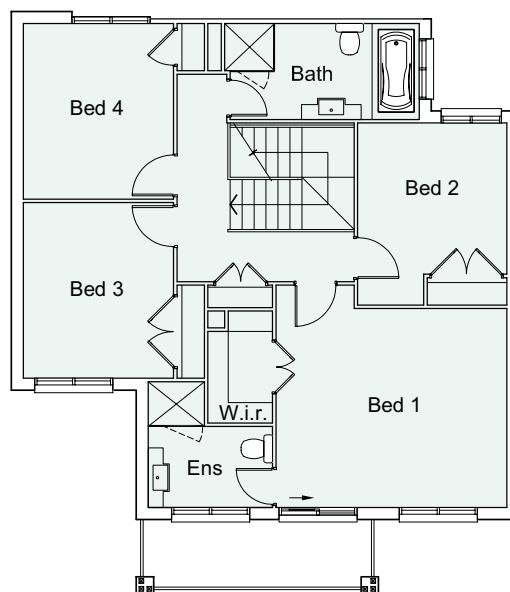
Front elevation



Back elevation



Ground floor plan



First floor plan

VISIT: Corner Little Bay Road & Clonard Way, Little Bay

OPEN: Sat-Wed 10am-5pm

CALL: 9694 1052

BROWSE: investa.com.au/iluka

Disclaimer: Images are for illustrative purposes only. Prices displayed are current at the time of issue, but may change at any time. Investa Property Group reserves the right to change pricing or promotional packages without notice. Marketect Pty Ltd Licence No. 1200754.